

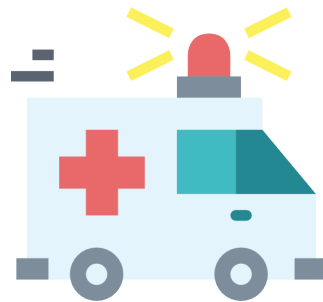
Fylde Coast CCGs Annual Commissioning Plan 2018/19

Fylde and Wyre CCG and Blackpool CCG are key partners within the Healthier Fylde Coast system.

During 2018-19 they will be working with partners to progress a number of transformational programmes and priorities, these can be grouped into four key areas:



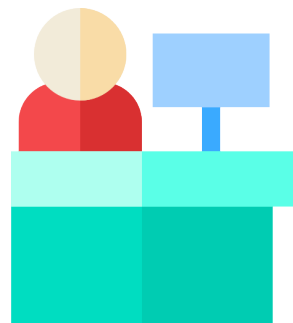
Primary and community care and wellbeing



Urgent and emergency care



Planned care

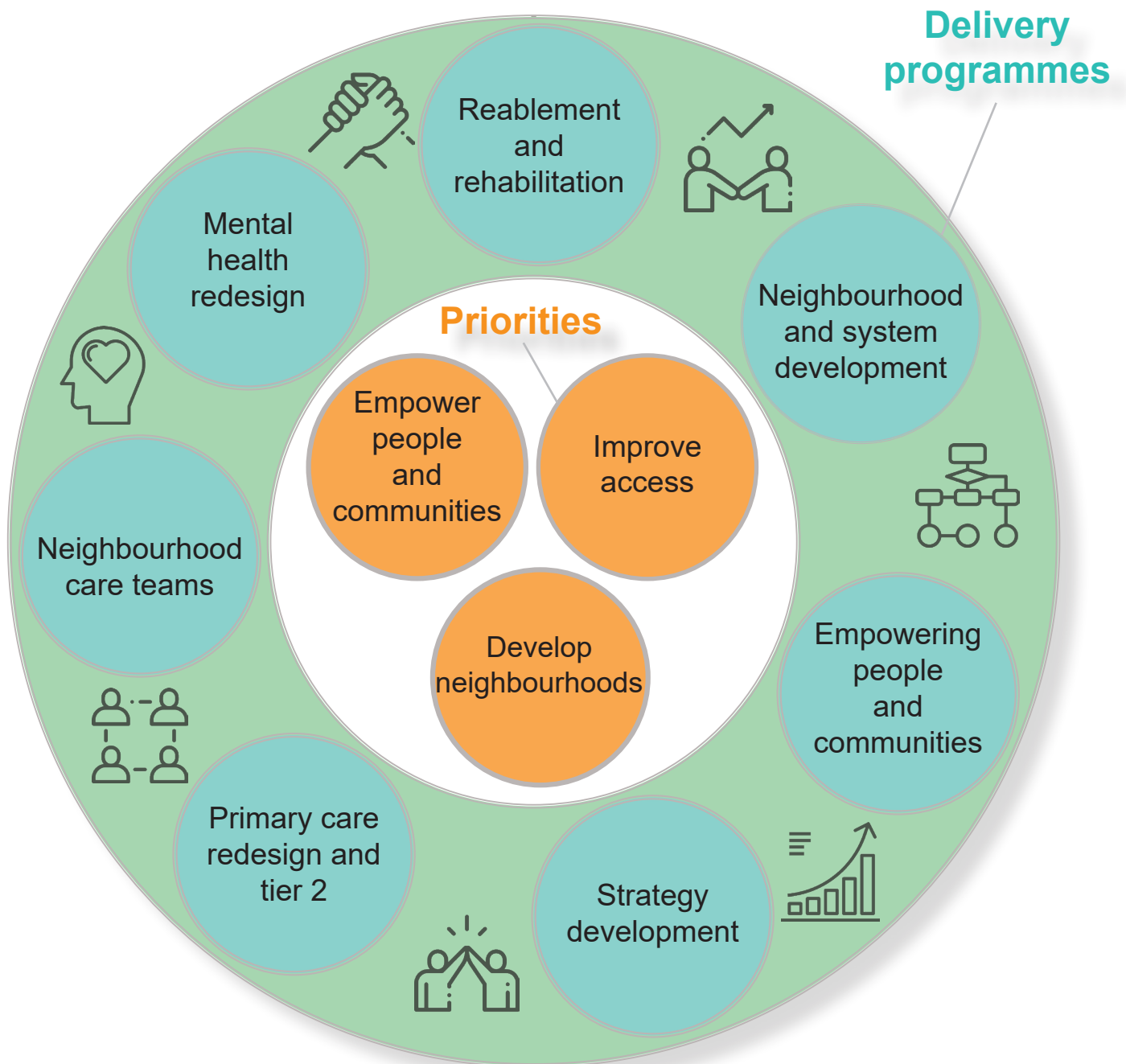


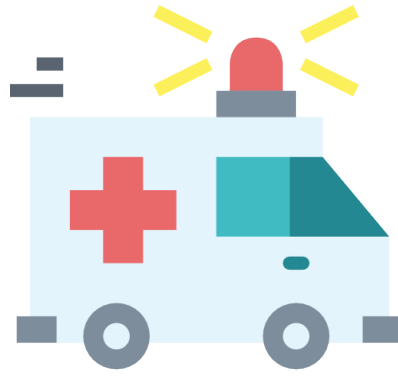
Corporate services

The CCGs' commissioning priorities and plan are reflected in the integrated care partnership (ICP) priorities and delivery programmes which are outlined below.

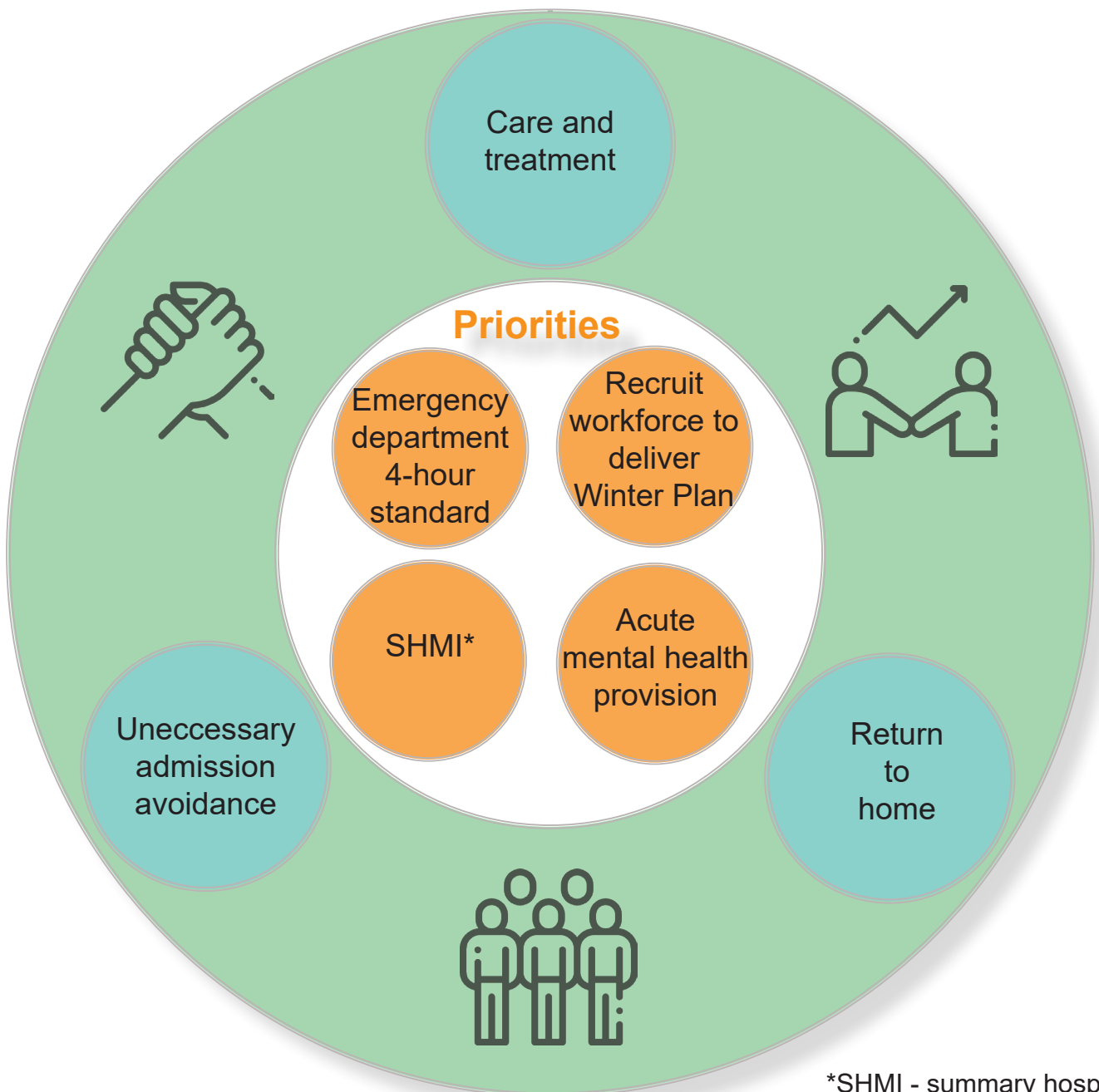


Primary and community care and wellbeing





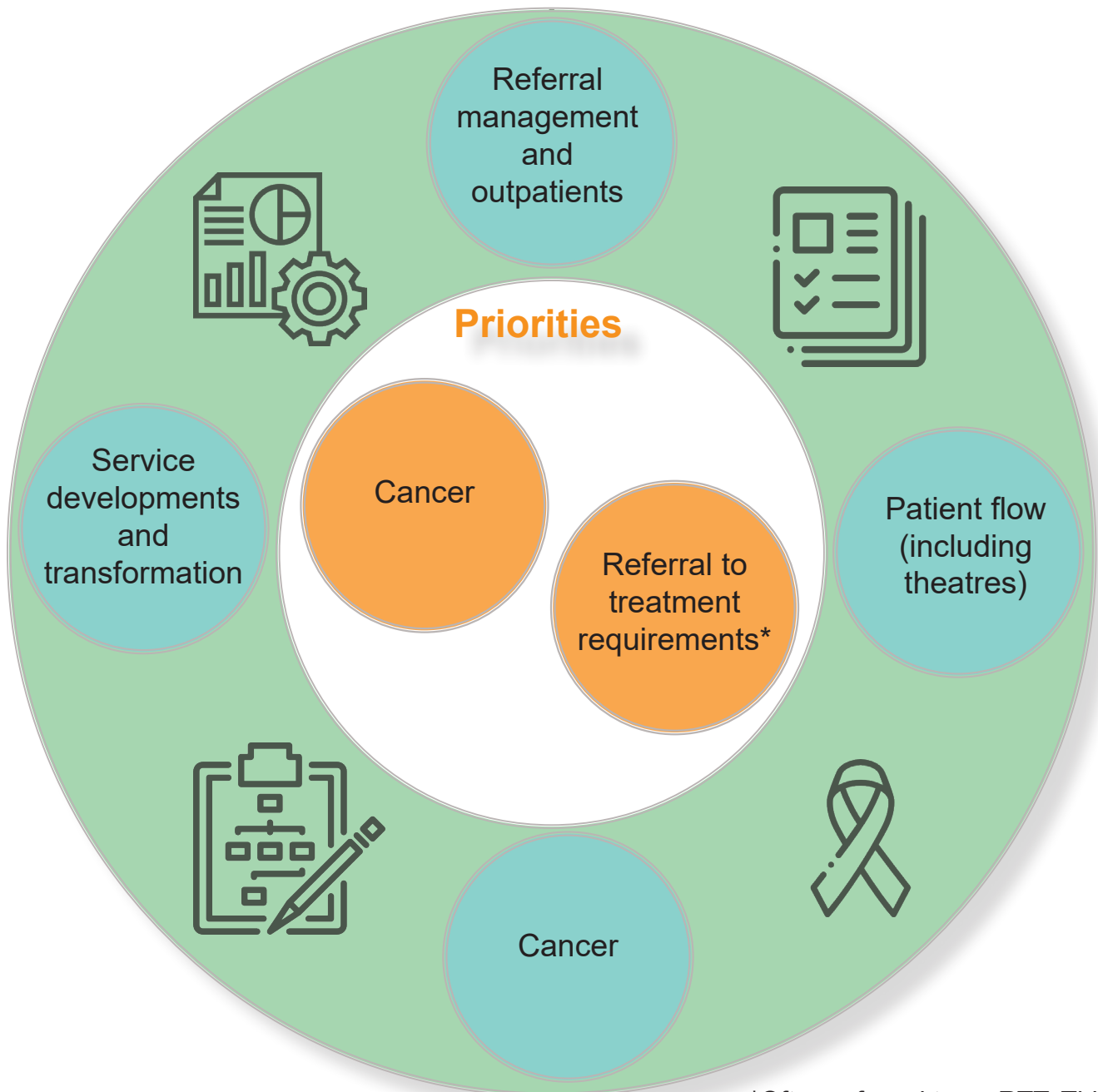
Urgent and emergency care



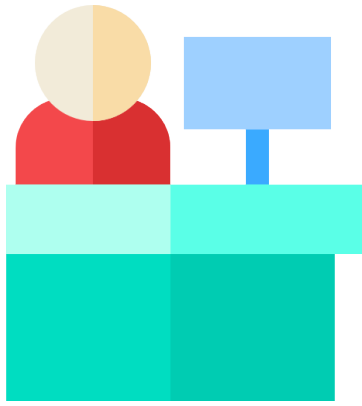
*SHMI - summary hospital-level mortality indicator



Planned care



*Often referred to as RTT. This is the 18-week referral to treatment time target for providers.



Corporate services

